

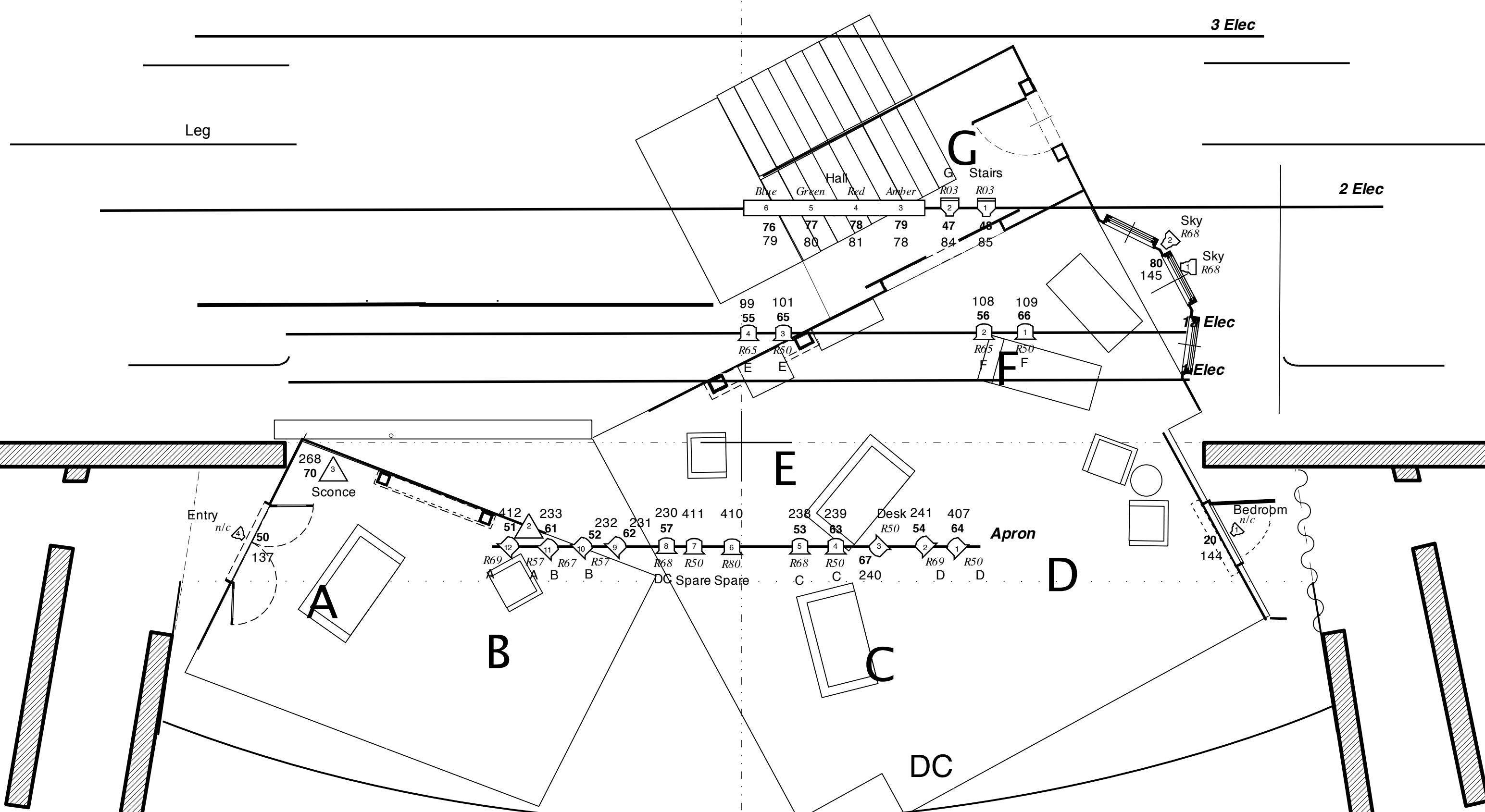
- 28
  - 27
  - 26 #5 Elec
  - 25
  - 24
  - 23
  - 22
  - 21
  - 20
  - 19
  - 18 #3 Elec
  - 17
  - 16
  - 15
  - 14
  - 13
  - 12 #2 Elec
  - 10
  - 9
  - 8
  - 7
  - 6
  - #1A Elec
  - 4 Form
  - #1 Elec
  - 2
- Main Curtain  
Fire curtain

CYC TOP

CYC FLOOR

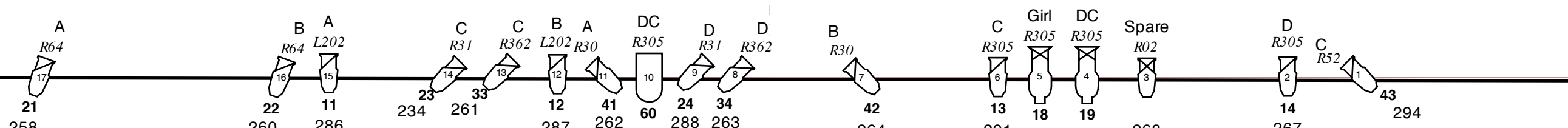
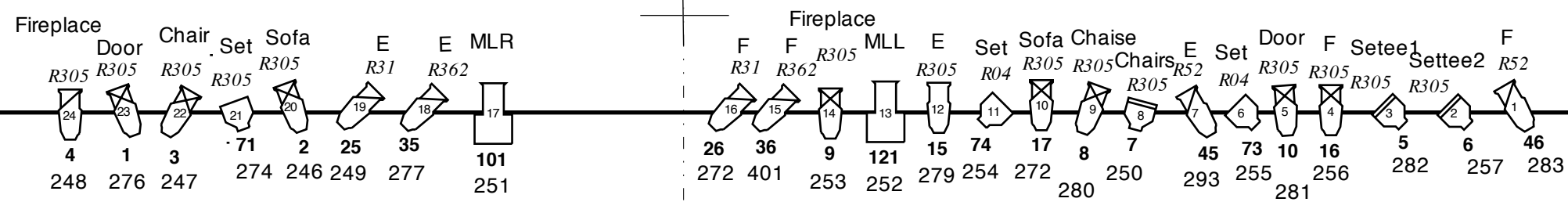
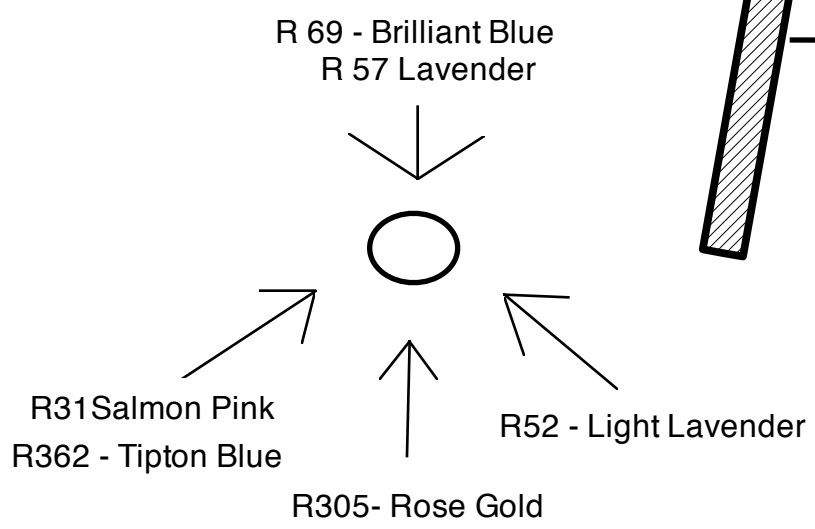
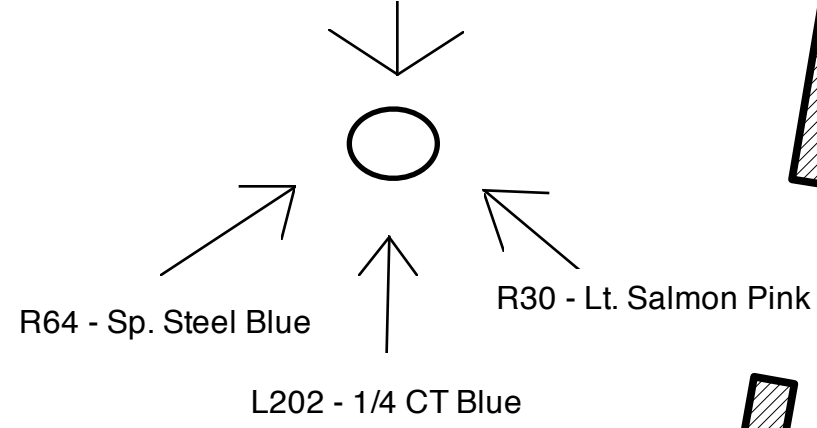
Blue 5, 8, 12, 16, 21, 25, 29  
Green 4, 9, 13, 17, 22, 26, 30  
Red 3, 6, 11, 15, 20, 24, 28  
Amber 2, 7, 10, 14, 19, 23, 27

Blue 162, 166, 170, 174, 178  
Green 163, 167, 171, 175, 179  
Red 164, 168, 172, 176, 180  
Amber



**COLOR KEY**

R 69 - Brilliant Blue  
R 57 Lavender



Key	Use	Color	Channel	Dimmer	
	36° Source Four		Parnel		Teenie Weenie
	26° Source Four		6x16		Teenie
	19° Source Four		6" Fres		par64mfl
	Medium		HPZ 215		strip
	Special				

**The Children's Hour**

Venue: Fredric March Theatre

Designer: Mick Alderson

11/7/11

**Light Plot**